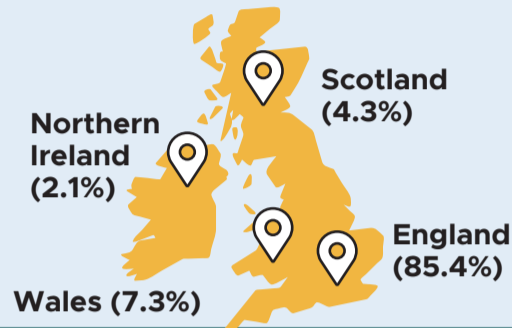


2021 National Findings

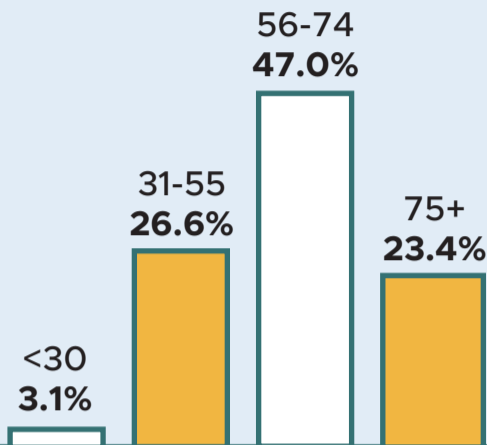
Patient reported experience of kidney care in the UK

12,416

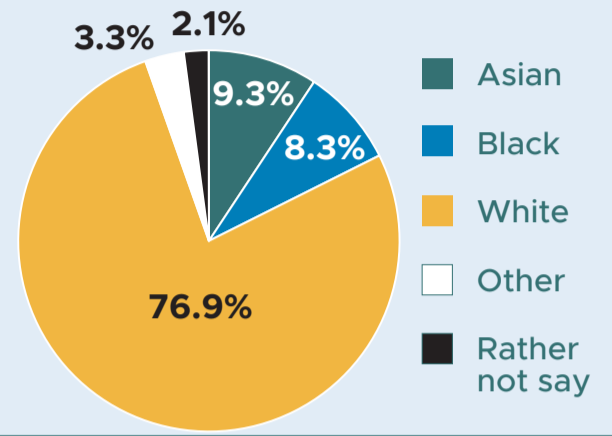
people with kidney disease took part, with all **68** adult centres and **297** units across the UK represented.



Age

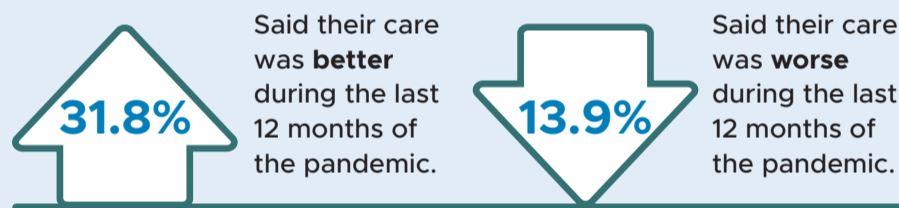


Ethnicity



Impact of COVID-19 on patient experience of care

For four in five patients, their overall experience of kidney care stayed the same or was better during the last 12 months. People with a transplant and those with CKD not receiving KRT are more likely than those on dialysis to report a worse experience.



Areas of experience scoring highest

Score out of 7

Privacy & Dignity
6.40



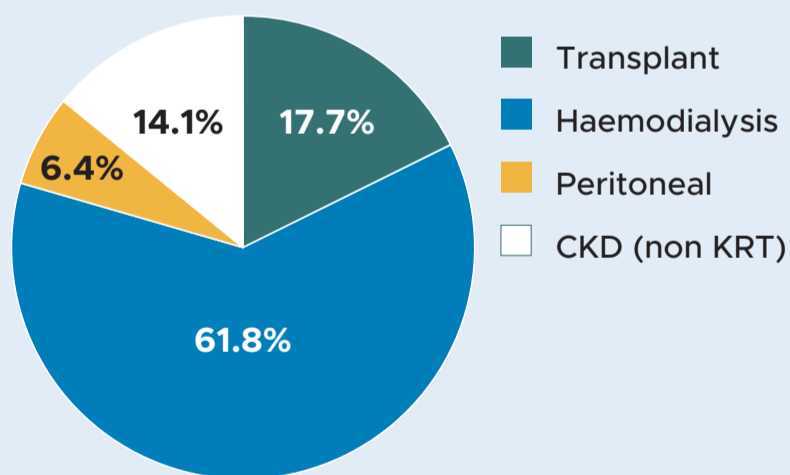
Patient Information
6.35



Access to the Kidney Team
6.34



Current Treatment



Areas of experience scoring lowest

Score out of 7

Transport
5.75



Support
5.73



Sharing Decisions
5.54



Patient comments and feedback

3,877 people provided comments about their experience of kidney care. These comments reveal, on a centre level, what matters to them most and has been shared with Clinical Directors to review.

www.kidneycareuk.org/PREM

[f kidneycareuk.org](https://www.facebook.com/kidneycareuk) [@kidneycareuk](https://twitter.com/kidneycareuk) [@kidneycareuk](https://www.instagram.com/kidneycareuk)

www.ukkidney.org

[@UKKidney](https://twitter.com/UKKidney)