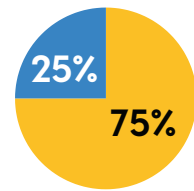


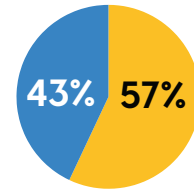
Differences in access to the kidney transplant waiting list in the UK

WHO DID WE INCLUDE?



We looked at adults aged **18-75** who needed **dialysis or transplant** between 2017 and 2020

WHAT HAPPENED TO THEM IN 2 YEARS?



We followed them up for **two years** to see if they **received or were listed** for a transplant

WHAT DIFFERENCES DID WE FIND BETWEEN THE PEOPLE WHO WERE LISTED AND THE PEOPLE WHO WERE NOT?



Males and females were **equally** likely to be listed



Patients with diabetes were **less likely** to be listed



Asian people were **more likely** to be listed

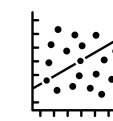
Black people were **less likely** to be listed



Patients who lived in more deprived areas were **less likely** to be listed

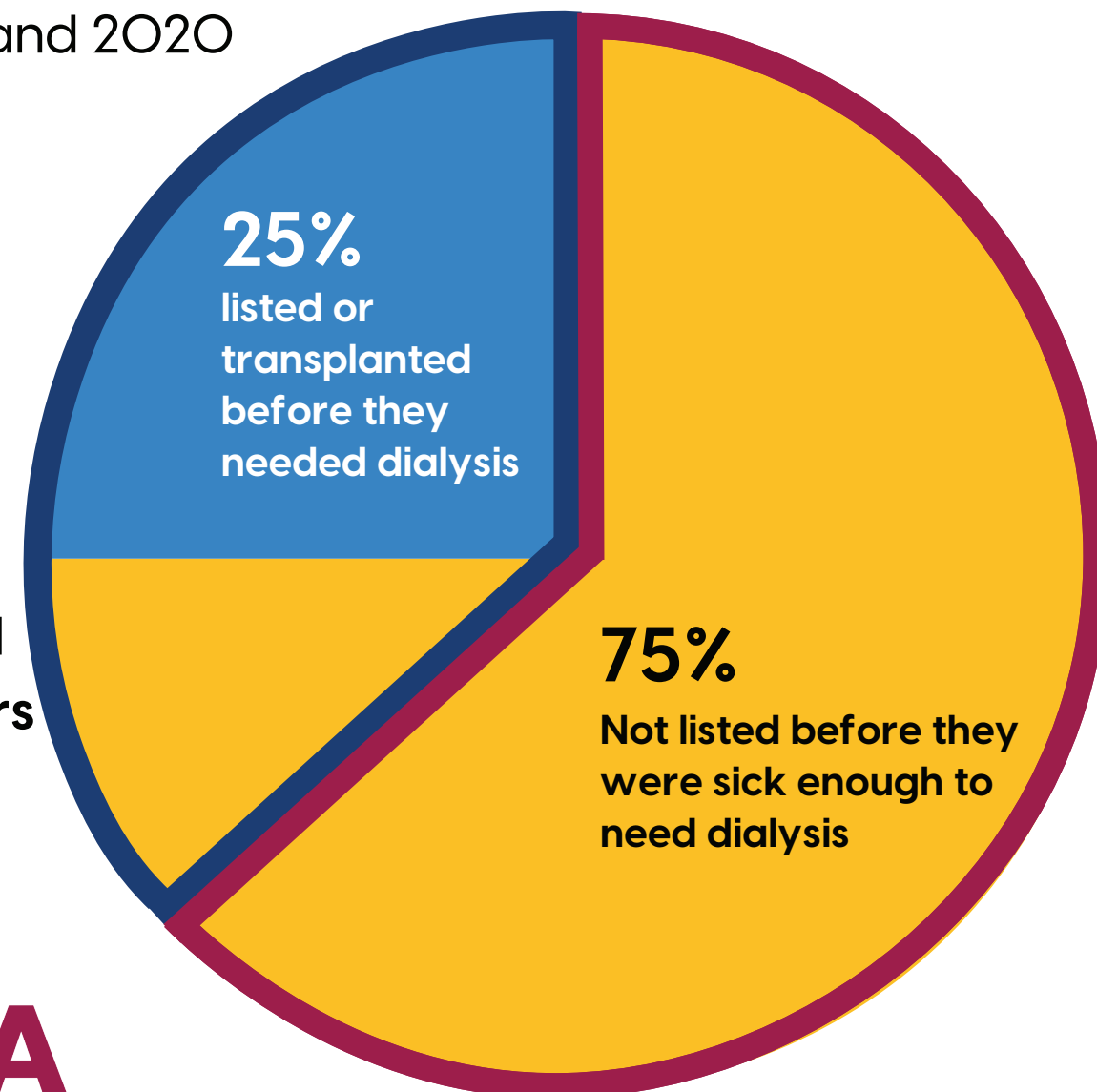


Patients treated in transplant centres were **more likely** to be listed than those in non-transplant centres



Which centre a patient was treated at appeared to affect how likely they were to be listed

57%
not listed or
transplanted
within 2 years



43%
listed or
transplanted
within 2 years

WHAT NEXT?

We need to do more research to understand these differences.

We want to find out how to improve things so that everyone has equal access to the transplant waiting list.